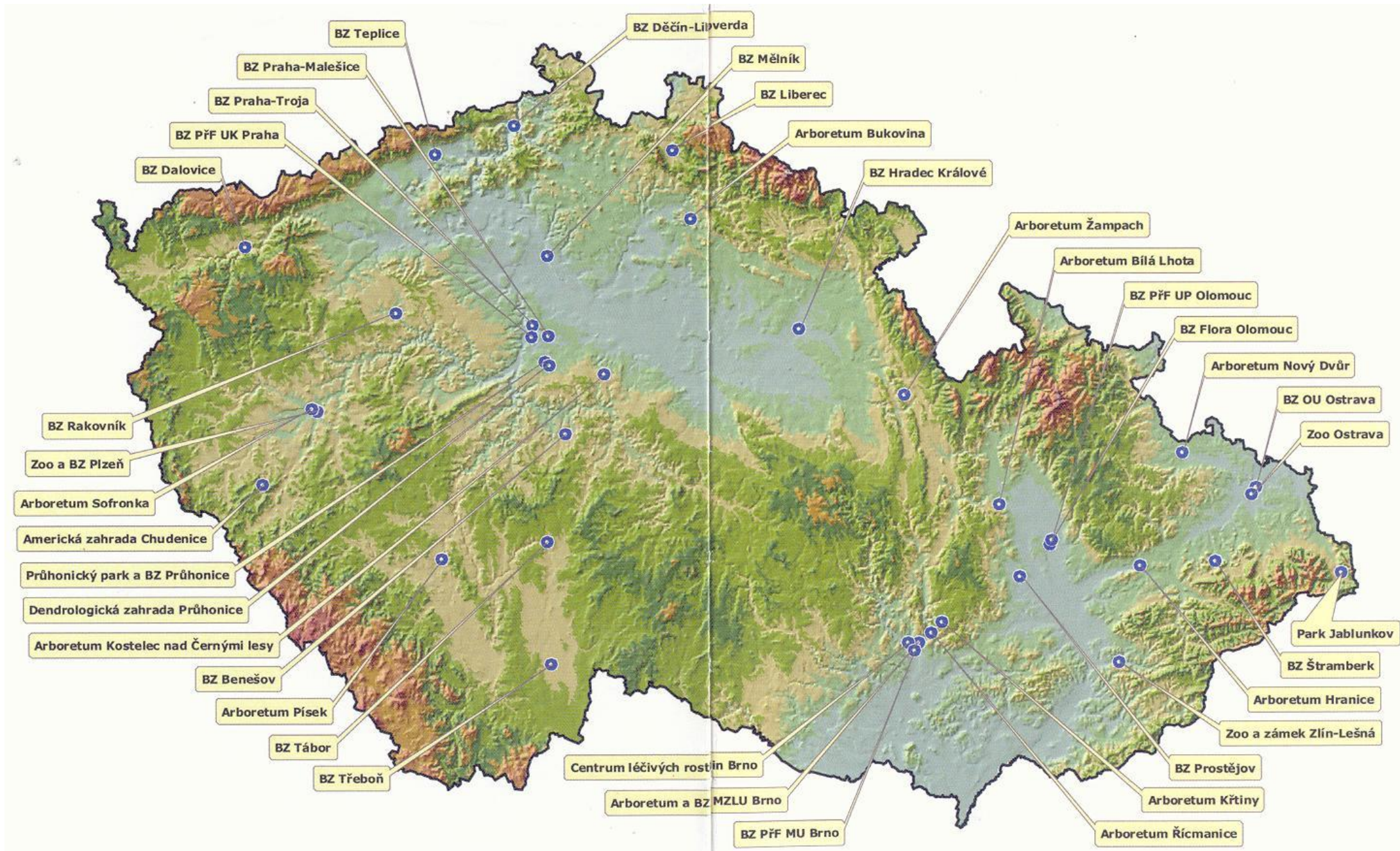


Současná krajinářská architektura

Přednáška č.8

Speciální zahrady a soudobé přístupy k řešení





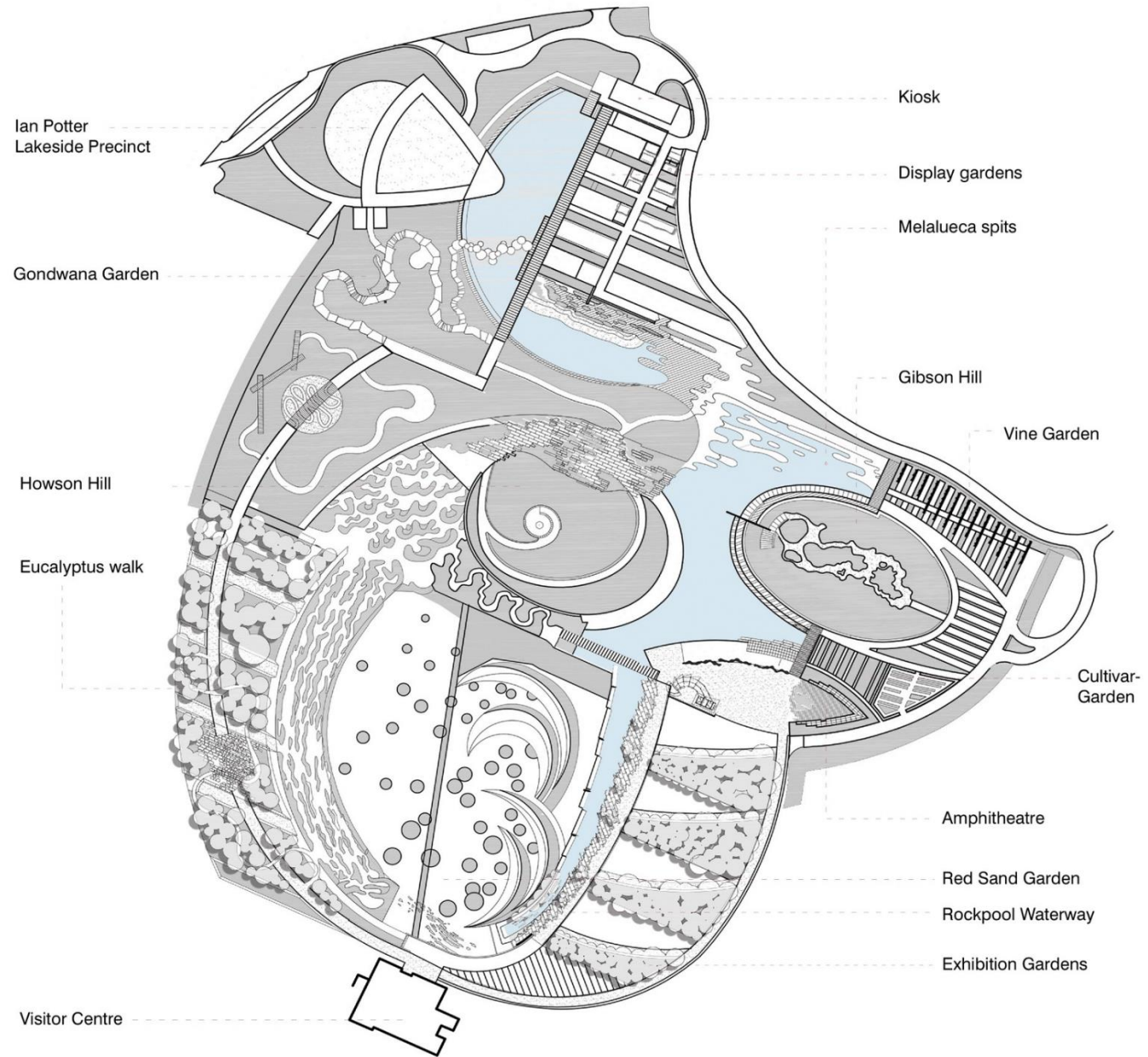


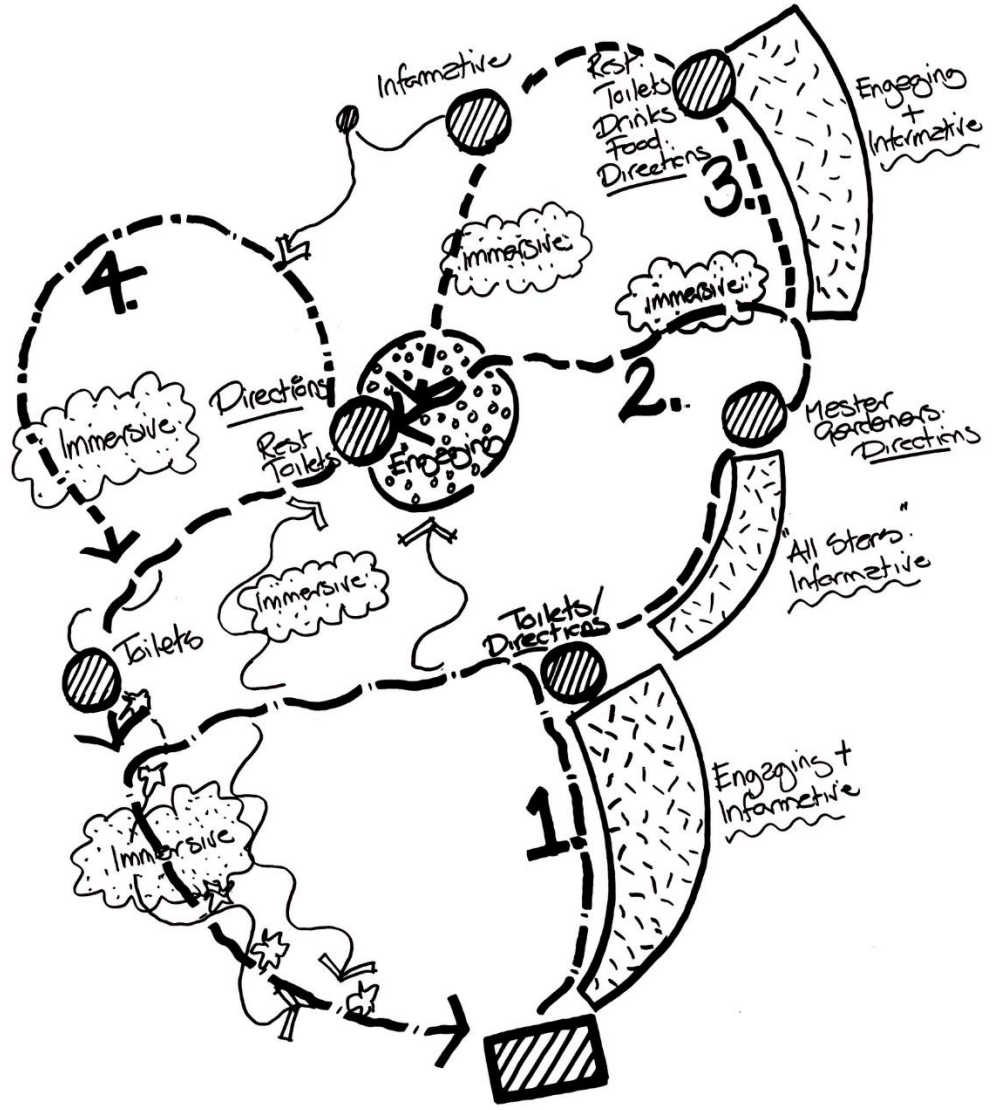




Australská botanická zahrada

<http://stavbaweb.dumabyt.cz/Zahrady-parky/Taylor-Cullity-Lethlean-Paul-Thompson-Australska-zahrada.html>



























Tree museum

- <http://www.archiweb.cz/buildings.php?type=33&action=show&id=3241>





















Healing gardens

https://www.youtube.com/watch?v=Q_LGtCW5Zqg

A man in a white lab coat is sitting in a wooden chair in a lush indoor garden. The garden is filled with large green plants and several large white flowers. The background shows a building with windows. The text "GARDENS THAT HEAL" is written in large white letters, and "The Atriums at Henry Ford Hospital" is written in smaller white letters below it.

GARDENS THAT HEAL

The Atriums at Henry Ford Hospital

https://www.youtube.com/watch?v=Q_LGtCW5Zqg







Dánsko

- <http://www.worldarchitecture.org/architecture-news/cpfeg/nordic-aart-architects-smakmidtconsultvega-landscape-has-won-the-open-competition.html>





























Danbury Hospital, Danbury, Conn. Bronze Award. Custom wood and metal trellis structures with strategically placed plants create shading and privacy around seating areas. Photo: Mark Weinberg.



UPMC Passavant, Pittsburgh - Bronze Award. The healing garden's challenging location required creative solutions in designing a functional outdoor space. Photo: © 2011 Ed Massery.



Located at the apex of the garden, an airy wood and stone gazebo provides shelter without blocking the city views. Photo: © Anton Grassl/Esto.

Fiona hospital

https://www.youtube.com/watch?v=KLVr_WonA58

Theraphy garden

<https://www.youtube.com/watch?v=fTM5nS7yYT8>

<http://www.healthcaredesignmagazine.com/article/lauded-landscapes-inspiring-views-award-winning-outdoor-spaces>

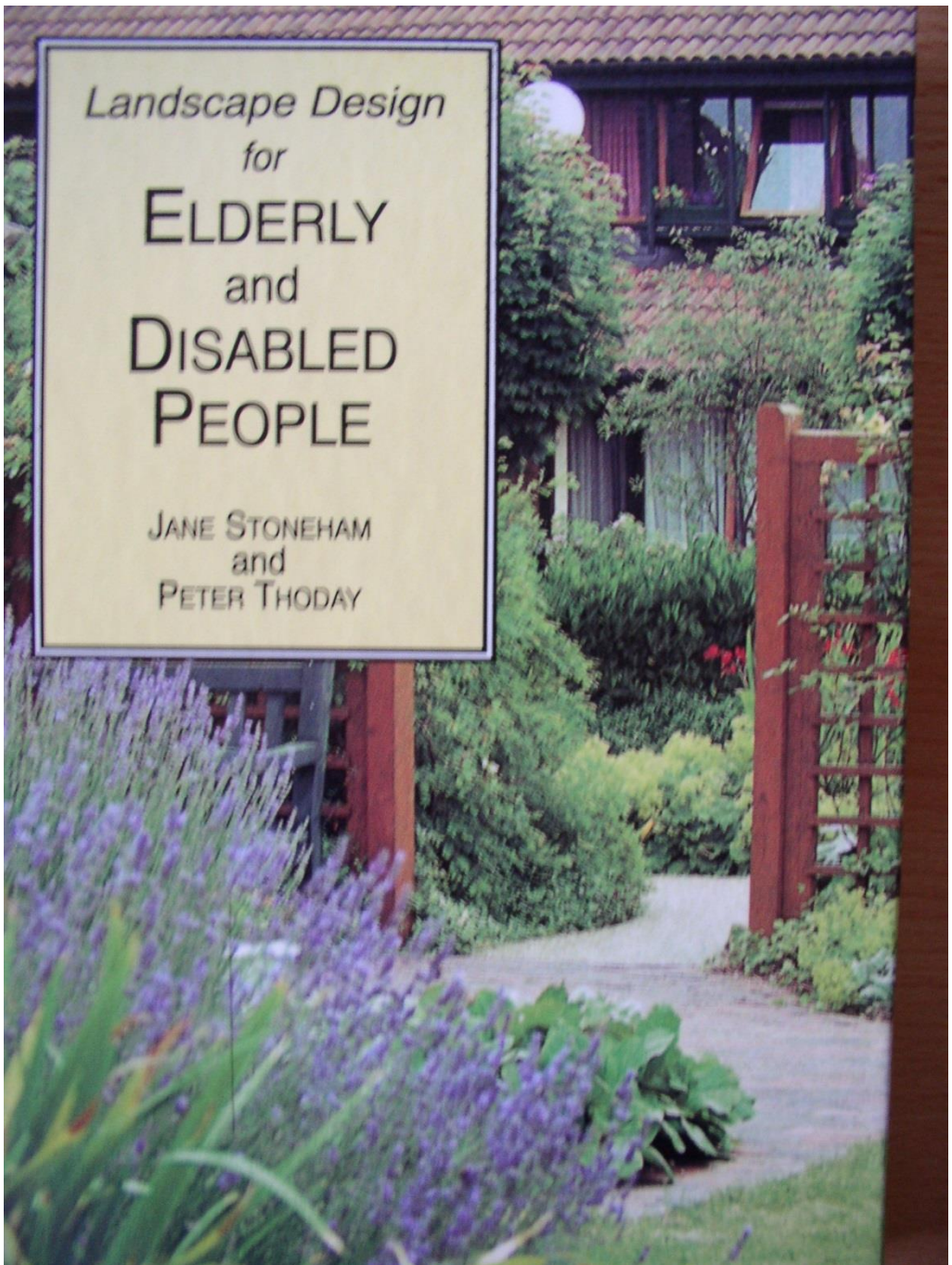
Clare Cooper Marcus Naomi A. Sachs Foreword by Roger S. Ulrich



Therapeutic Landscapes

An Evidence-Based Approach to Designing
Healing Gardens and Restorative Outdoor Spaces

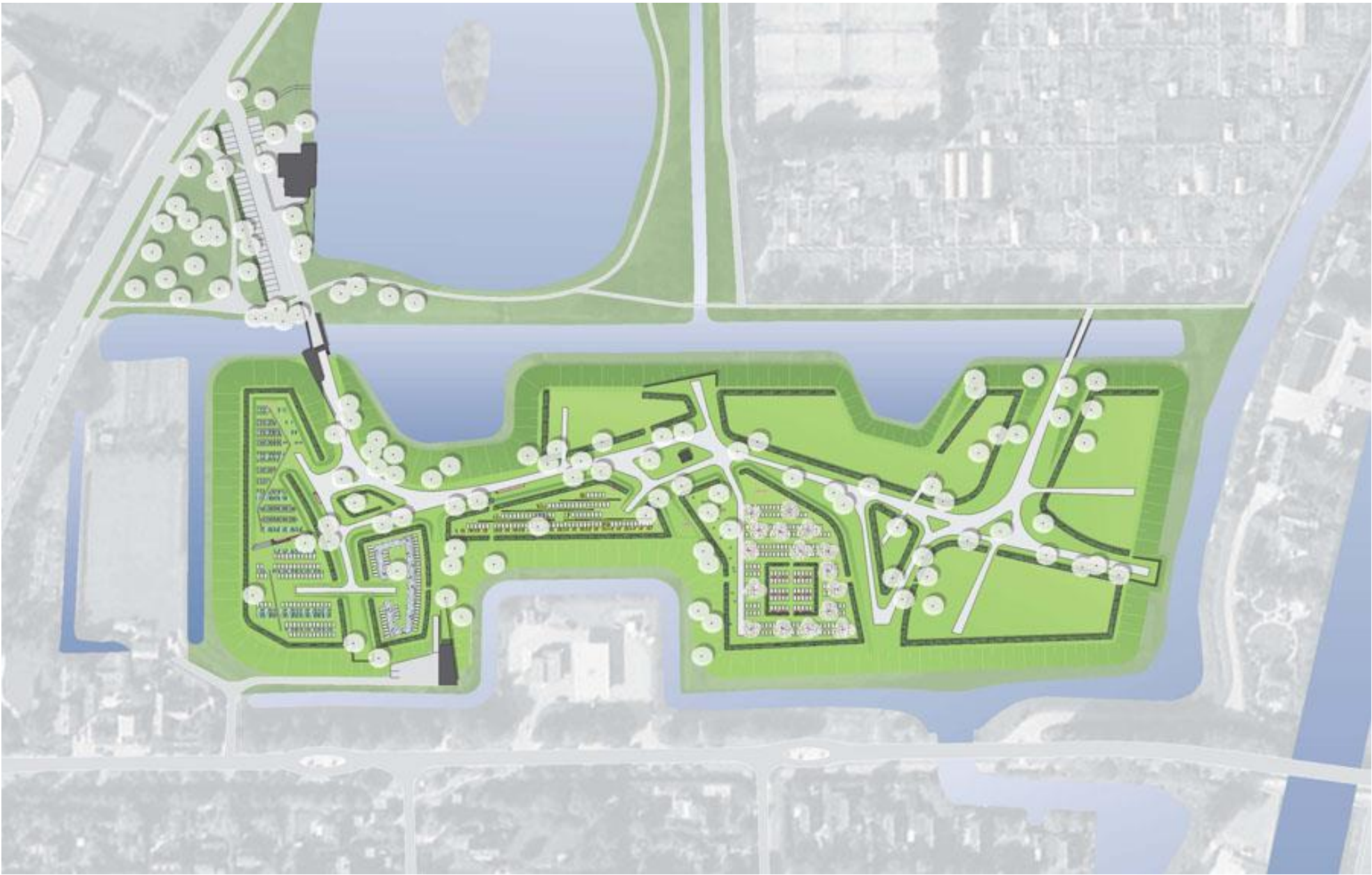
WILEY



















KONINKRIJK
DER NEDERLANDEN
K. J. SCHUBERT
1844-1911

KONINKRIJK
DER NEDERLANDEN
H. J. J. J. J.
1844-1911

KONINKRIJK
DER NEDERLANDEN
H. J. J. J. J.
1844-1911

KONINKRIJK
DER NEDERLANDEN
G. J. J. J. J.
1844-1911

KONINKRIJK
DER NEDERLANDEN
L. H. J. J. J.
1844-1911

KONINKRIJK
DER NEDERLANDEN
P. A. J. J. J.
1844-1911

KONINKRIJK
DER NEDERLANDEN
G. H. J. J. J.
1844-1911

KONINKRIJK
DER NEDERLANDEN
B. H. J. J. J.
1844-1911

KONINKRIJK
DER NEDERLANDEN
B. H. J. J. J.
1844-1911

AN
5













BOUDEVIN
KAREL BOOM
GER. 26 MAART 1905
OVERL. 21 MAART 1980
PETRONELLA
ISABELLA MOLLER
GER. 3 MEI 1905
OVERL. 6 DEC. 1985
MARGIE SOPHIE NOOL
GER. 3 SEPT. 1904
OVERL. 5 SEPT. 1984





















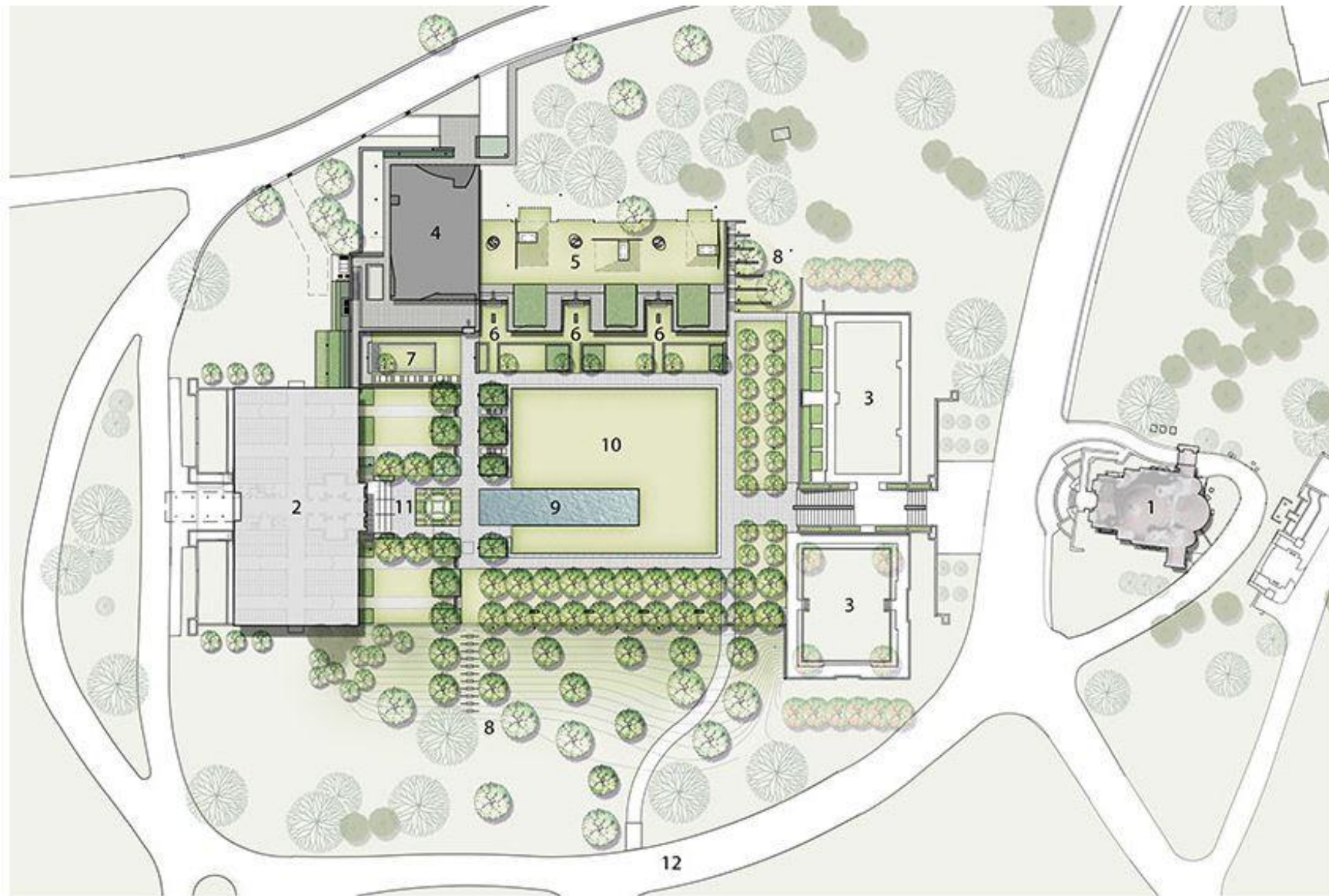








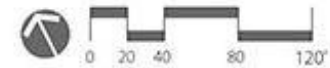




- 1 Chapel (1909)
- 2 Mausoleum (1967)
- 3 "Garden Crypts" (1960's)
- 4 New Mausoleum + Reception Center

- 5 Green roof
- 6 New garden niche "rooms"
- 7 New garden crypt "room"
- 8 Terraced lawn steps

- 9 Reflecting pool
- 10 Central gathering space
- 11 Knot garden
- 12 Service drive





Hřbitov - Weiach

- <http://www.archiweb.cz/buildings.php?type=33&action=show&id=3227>
- <http://www.kuhn-la.ch/>

